

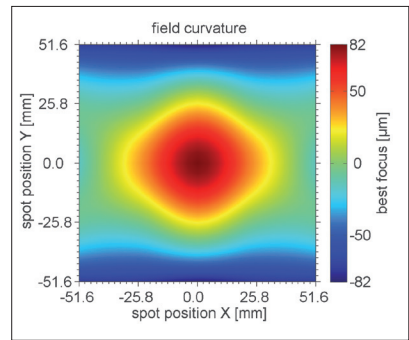
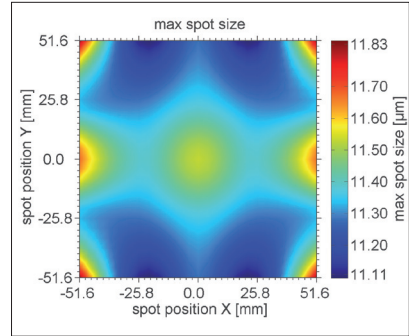
F-Theta JENar™ Silverline™ Lens

High Power Lens – JENar™ 170-355-140

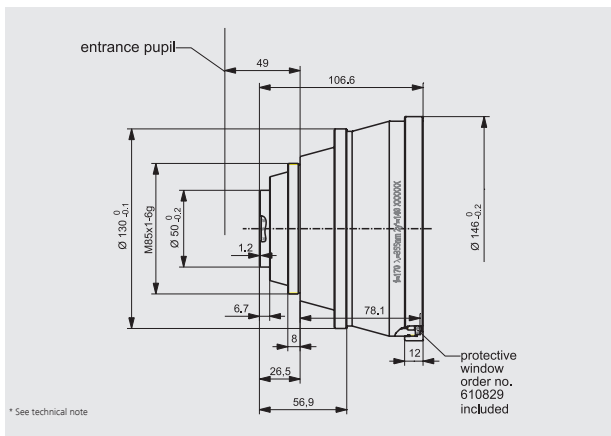


Parameters	JENar™ 170-355-140 Telecentric fused silica lens for large scan fields
Focal length:	170 mm
Wavelength:	355 nm
Scan field (X x Y); Ø:	(100 mm x 100 mm); 140 mm
Diagonal scan angle:	50°
Back working distance:	235.8 mm
Flange focus distance:	315.8 mm
Input beam Ø 1/e ² :	10 mm
Focus size Ø 1/e ² :	11 µm
a1:	13 mm
a2:	42.5 mm
Telecentricity (only F-Theta with scanner):	4.8° 4.8°
Group delay dispersion (GDD)*:	8490 fs ²
LIDT coating pulsed; CW*:	1.0 J/cm ² * (τ/[ns]) ^ 0.40; 1.0 MW/cm ²
LIDT system pulsed; CW*:	0.5 J/cm ² * (τ/[ns]) ^ 0.40; 0.5 MW/cm ²
Weight:	1.85 kg
Order Number::	586840

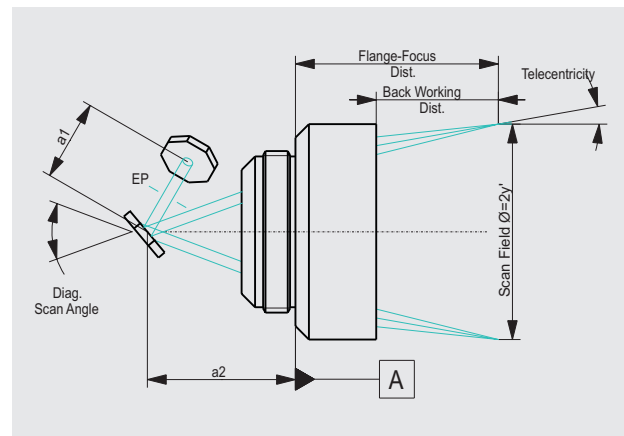
Spot properties



Specifications JENar™ 170-355-140



Definition of geometrical parameters



JENar™ 170-355-140: Registered Design in DE, 40 2016 000 911.4, CN, EU, JP, HK | Design appl. pending for KR, SG, IN, TW
 Patent pending DE 10 2017 209 325 | Utility patent DE 20 2016 004 165.8 | Utility patent pending CN, KR

